



BRETAGNE

THE TOURISM MAGAZINE



Bédée . Breteil . Iffendic . La Nouaye
. Montfort-sur-Meu Pleumeleuc .
Saint-Gonlay . Talensac



#2025

AROUND THE LAKE OF TRÉMELIN



ON THE EDGE OF THE FOREST OF BROCÉLIANDE, YOU ENTER THE "PURPLE COUNTRY"

Here, villages built of purple shale stone, large wooded areas and bucolic ponds invite you to take a **change of scenery**.

But you can also experience this beautiful area at its most intense! Lovers of outdoor sports will be won over by this **natural playground**.



TOURIST OFFICE
at Lac de Trémelin
02 99 09 06 50





MONTFORT-SUR-MEU

A colourful town built of violet stone, the **Petite Cité de Caractère®** offers a beautiful walk between history and nature. Stroll through the **old medieval town** and discover the remains of the 14th century, such as the famous Tour du Papegault, the best-preserved feature to date. Alternatively, follow the Meu to see wash-houses and mills, and wander through parks and gardens.

LITTLE ADVICE



- ◆ In fine weather, **guided tours** are available **on foot or by canoe**. **Book by phone**
- ◆ On friday and saturday morning enjoy the **local producer market**

LE DOMAINE DE BOUTAVENT

The ruins of an ancient medieval castle lie hidden in the **Domaine de Boutavent**, a natural and archaeological site in Iffendic. Thanks to the latest excavations, it is estimated to have been built in the 12th century, making it one of **the oldest castles in Brittany !** And to top it all off, there's a belvedere offering an incredible view of the Brocéliande forest massif.



HIKING



More than 300 km of waymarked footpaths criss-cross the **Pourpré region**. Whether it's the GR® 37 or the GR® de Pays Tour de Brocéliande, or a day trip around the local loops, our **walking, cycling and horse-riding trails** await you.

An «**Espace trail-running**» is opened, offering **12 trails ranging from 9 to 52 km** and of varying levels of difficulty. These trails are perfect for beginners or for year-round training. Passing through woodland, moorland, countryside and charming little villages, they're also a great way to **combine the pleasures of sport** with those of sightseeing.



SAINT GONLAY



Embark on a journey **back in time** to discover the little town of Saint-Gonlay, which has managed to retain its charm of yesteryear.

Open the door of the schoolhouse, now a museum, and immerse yourself in **the atmosphere of the 1950s**. Blackboard, the smell of chalk, dunce caps and ink stains guaranteed! Just across the road, Johanna de la Barakafé welcomes you for a **refreshing break**. ◆ **Tours and discovery booklets are free (in french).**

Group bookings only..

02 99 09 77 29 - musee-ecole35.com



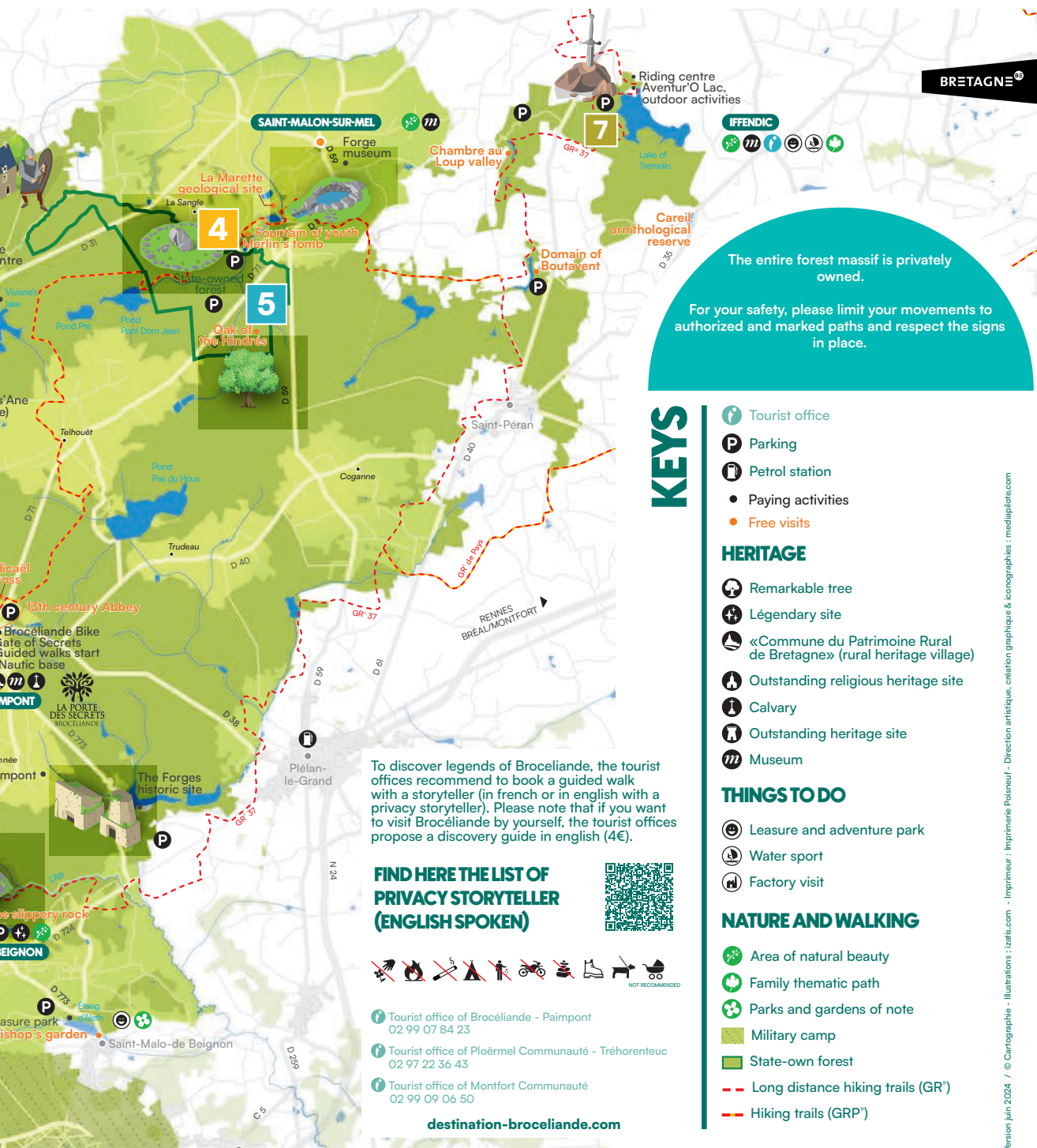
FOREST OF BROCELIANDE

SPRING - SUMMER

April 1 to september 15

DISTANCES	PAIMPONT	CONCORET	STATE-OWNED FOREST	TRÉHORENTEUC	LAKE OF TRÉMELIN
CONCORET	7 km	CONCORET			
STATE-OWNED FOREST	10 km	6 km	STATE-OWNED FOREST		
TRÉHORENTEUC	14 km	11 km	17 km	TRÉHORENTEUC	
LAKE OF TRÉMELIN	18 km	17 km	10 km	28 km	LAKE OF TRÉMELIN
BEIGNON	8 km	15 km	18 km	17 km	21 km





LE VALLON DE LA CHAMBRE AU LOUP



This is our very own 'little canyon'. Climb the 35 m high cliffs and enjoy the view. As the seasons change, the violet of the rock, the gold of the gorse and broom, the purple of the heather and the green of the dense vegetation offer a delightful palette of colours.

In fact, if you look closely at the rocks at the end of the pond, you'll understand how the valley got its name: you'll see the silhouette of a wolf, its mouth raised to the sky. It is said that when Brittany was threatened, the great wolf transformed himself into an invincible warrior (so don't threaten Brittany)!

WE RECOMMEND THAT YOU FOLLOW THE P'TITS LOUPS TRAIL! THE DISCOVERY BOOKLET IS AVAILABLE FREE OF CHARGE FROM THE TOURIST OFFICE (LOCATED AT LAC DE TRÉMELIN) AND CAN BE DOWNLOADED FROM OUR WEBSITE (IN FRENCH ONLY).



CAREIL ORNITHOLOGICAL RESERVE

A **haven of peace** where you can unwind, this **bird sanctuary** has been 'the place to be' for over 150 different species since 1988. As you stroll through the heart of this departmental nature reserve, you'll come across two observation posts specially set up to help you **discover the world of birds**.

DO YOU KNOW ?



It is also a place of refuge for other animals such as **Breton draught horses**, **Highland cattle** and a few **ditch goats**. While convalescing here, they also **maintain the meadows** (practical, you might say).

Not a bad retirement home, is it?



LITTLE ADVICE

♦ To enjoy the **peace and quiet of nature** and the soft light, we recommend you **get up early!** The coolness of the surroundings offers **special moments** of serenity, as well as unique encounters with the animals. What's more, you'll have a good excuse to answer the call of the siesta!

THE LAKE OF TREMELIN



In a green setting between moorland and forest, lac de trémelin is the ideal place to relax and get away from it all. with its leisure centre, it's also the ideal place to work out! fishing, tree climbing, water sports, swimming in summer (blue flag beach), walking or cycling, horse riding, children's games? Outdoor activities are in full swing.

And you can take your time, because there's also a restaurant, accommodation and even rooms to rent.

◆ **Tourist Office** - 02 99 09 06 50

◆ **Aventur'O Lac** - 06 31 34 09 28

◆ **Centre équestre** - 02 99 09 77 92 / 06 32 56 64 09



ALL THE ROUTES CAN BE DOWNLOADED FROM OUR WEBSITE, THEY ARE ALSO ON SALE FOR €0.20 AT THE TOURIST OFFICE..



WEDNESDAYS FROM THE LAC OF TREMELIN

Do you love the golden light of a summer's evening? On certain Wednesdays throughout the summer, bring your blanket and extend the day with a **free concert or show**. World, classical or Breton music, the repertoire is varied but always festive!



HIGHLIGHTS

◆ **DON'T MISS IT!** Get your trainers on! Set off to discover the trail-running routes of the Espace Trail de Brocéliande.

◆ **EARLY MORNING CANOE TRIP**

Every summer (only in french)

◆ **L'APARTÉ**

Discover contemporary art in the heart of nature

BÉDÉE

Bédée is a practical **stopover village** for a refreshing break on the holiday route. Treat yourself to a stroll along the water **to the Blavon and the medieval garden**

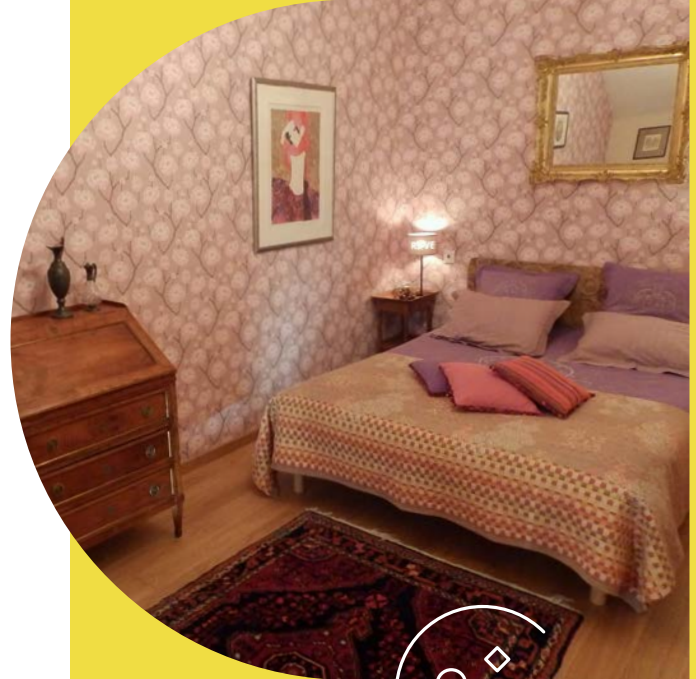




GO TO THE RESTAURANT

Brittany is known for its famous **crepes** and **buckwheat pancakes**. you must try one of our **creperies** and taste the **apple cider**.

[CHOOSE YOUR
RESTAURANT
HERE :](#)



SLEEP WELL IN BROCELIANDE

Enjoy your stay in brocéliande, the hosts will be delighted to welcome you.

[CHOOSE YOUR
ACCOMMODATION
HERE :](#)

